

# S5000 WAFER SORTER

Fast and Simple Wafer Sorting

## Benefits

- Intuitive graphical user interface simplifies the complex wafer sorting functions into easy-to-operate operations
- Report capability provides comprehensive information for wafer tracking
- State of the art OCR technology typically reads greater than 99% of wafer IDs

## Features

- Sort 50 mm – 300 mm wafers
- High-precision pre-aligner
- Dual end effector for maximum throughput
- Cassette mapping
- OCR, M12, M13, T7, Barcode
- Safety Light Curtain
- Windows PC-Based smartSort Graphical User Interface
- CE mark

## Options

- Top and bottom OCR
- Uninterrupted Power Supply (UPS)
- Vacuum reservoir
- Ionizer strip bar
- Wafer thickness measurement
- Dual-size bridging
- SECS/GEM compliance

## Description

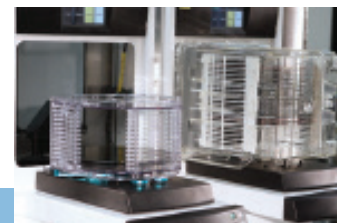
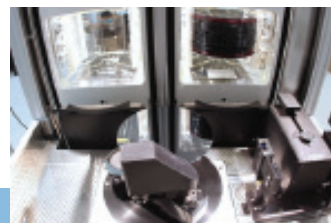
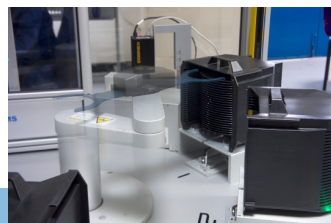
The S5000 is a recipe-driven, high-throughput wafer sorting system with an efficient radial footprint. C&D's smartSort S5000 provides an environment to sort your wafers which is high in safety, reliability, flexibility, throughput while low in downtime, cost of ownership, complexity and price.



Model S5030  
(up to 300 mm)



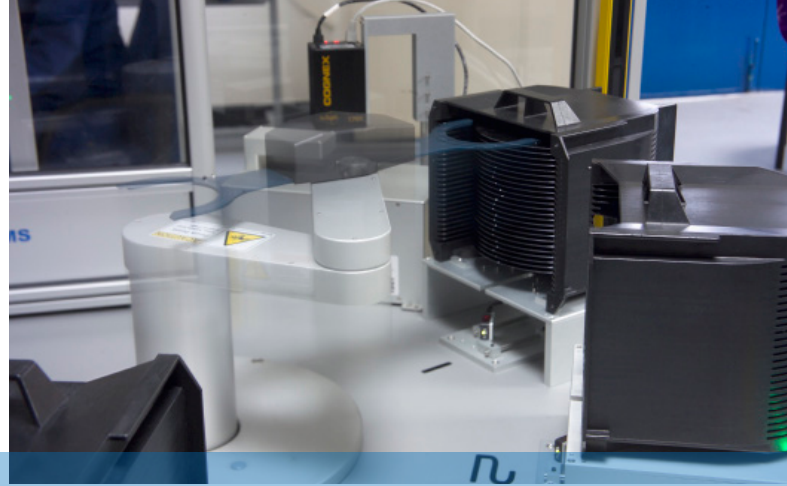
Model S5010  
(up to 200 mm)



## State of the art OCR technology

The S5000 Wafer Sorter uses state of the art OCR technology for reading the ID mark on a wafer. The OCR system is capable of reading alphanumeric laser scribes, T7 dot matrix or barcodes without recipe modifications. Read rate is typically greater >99%. It is also possible to include multiple cameras on a wafer sorter should a customer require reading of scribes on the topside and bottom side of the wafer.

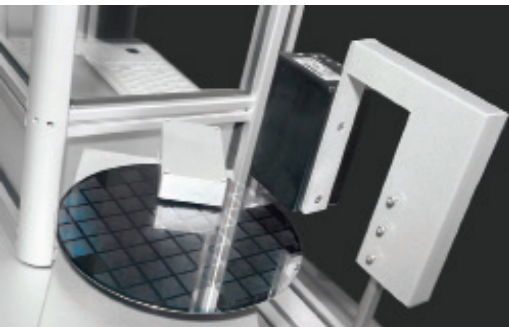
Should there be illegible wafers, the S5000 will allow user to manually enter wafer IDs.



## Easy to operate wafer sorting functions

C&D's Graphical User Interface is, quite simply, the most efficient software available for wafer sorting. Complex sorting functions are neatly organized into four main operation categories.

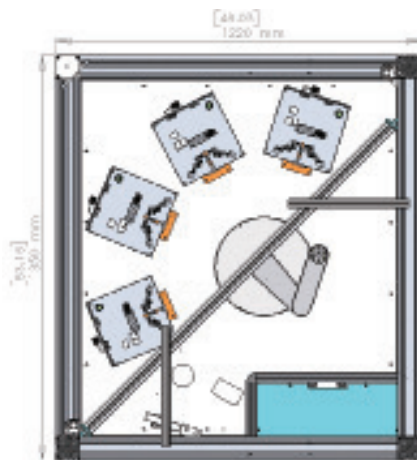
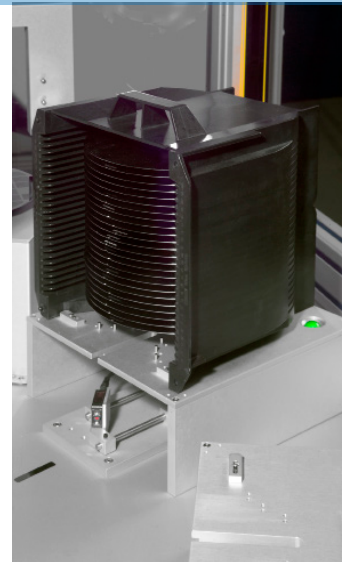
- Wafer transfer - move wafer from the source cassette to the destination cassette
- ID search - place wafers into designated slots in the destination cassette based on wafer ID
- Compress - move wafers from the source cassette and place them next to each other on destination cassette
- Randomize - move wafers from the source cassette and place them randomly into slots in the destination cassette



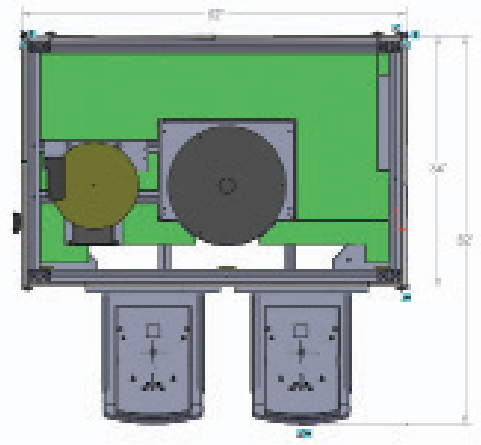
## Report capability provides comprehensive information

The S5000 provides comprehensive information about the operation of the system in the form of reports. The five types of reports that the S5000 is able to generate are:

- Batch report
- Wafer lost report
- Alarm report
- Session report
- System diagnostic report



Model S5010



Model S5030

Actual dimensions may vary depending upon system configuration.

## S5000 Technical Data

	Model S5010	Model S5030
Substrate Size	50 mm - 200 mm wafer	150 mm - 300 mm
Interface	Touchscreen PC based software user interface	Touchscreen PC based software user interface
Loading interface	2, 3, or 4 cassette stations	Load port modules for FOUP, FOSB, Crystal Pak
Wafer transfer method	Central robot with dual end-effector	Central robot with dual end-effector
Throughput (cassette to cassette)	400 wph	400 wph
Throughput (with OCR)	200 wph	200 wph